

Mounting instructions for SIT/SIY

SIT $\varnothing = 96 \text{ mm}$

SIT $S_n = 70 \text{ mm}$

SIY $\varnothing = 152 \text{ mm}$

SIY $S_n = 120 \text{ mm}$

1 = Active zone

Distance A = $2 \times \varnothing$

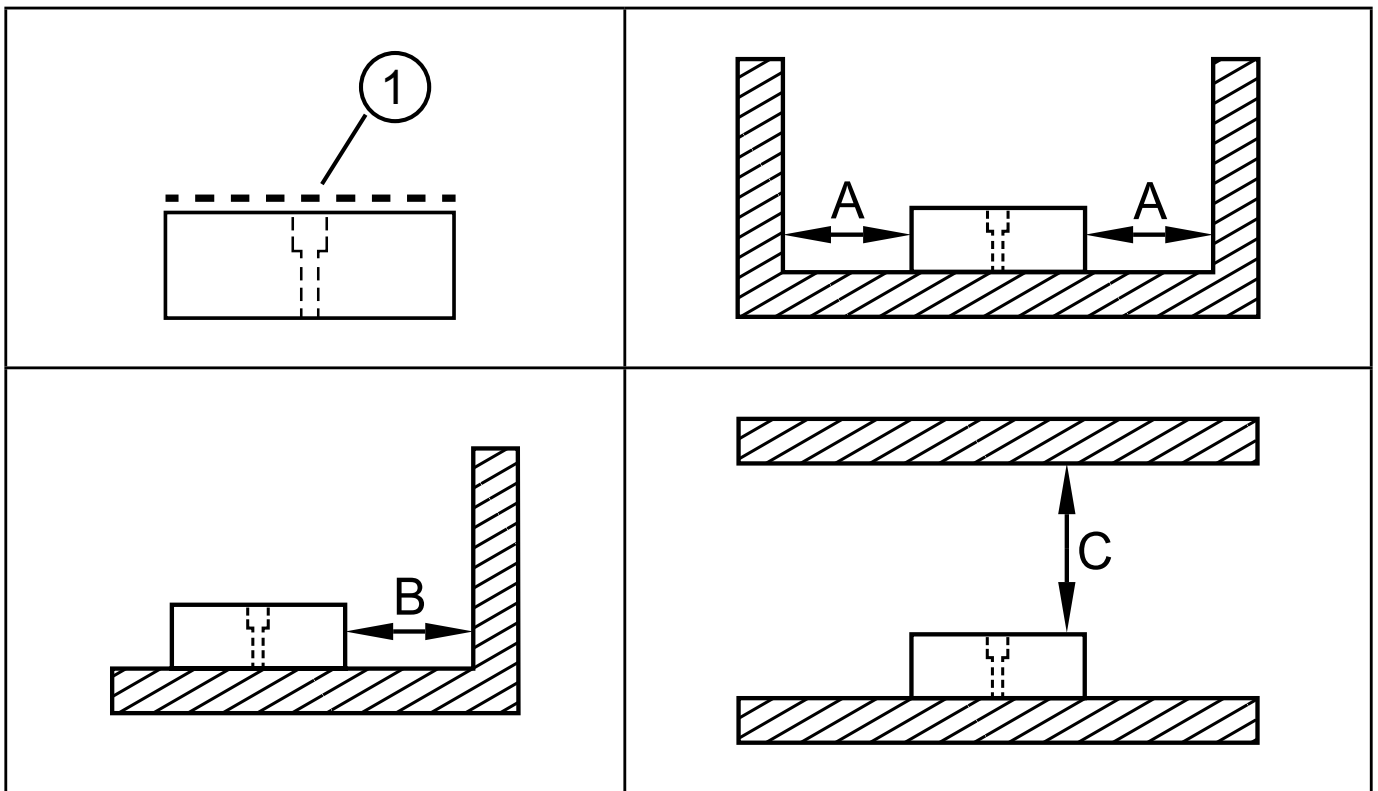
Distance B = $1,5 \times \varnothing$

Distance C = $3 \times S_n$

Distance D = $8 \times S_n$

Distance E = $3 \times \varnothing$

UK



When mounting units of the same type, certain minimum distances have to be adhered to if the units are mounted opposite each other or in parallel.

