

# Product data sheet

Specifications



advanced touchscreen panel,  
Harmony GTU, 7inch wide display,  
800 x 480pixels WVGA

HMIDT351

Product availability: Stock - Normally stocked in distribution facility

**Price\*: 1,115.00 USD**

## Main

Range Of Product	Harmony GTU
Product Or Component Type	Advanced touchscreen panel
Terminal Type	Touchscreen display
[Us] Rated Supply Voltage	12...24 V DC power supply
Supply Voltage Limits	10.8...28.8 V
Power Consumption In W	6.5 W
Inrush Current	30 A

## Complementary

Touchscreen Resolution	1024 x 1024
Pixel Resolution	800 x 480
Display Size	7 inch
Aspect Ratio	4:3
Display Type	Colour TFT LCD
Display Resolution	800 x 480 pixels WVGA
Display Colour	262144 colors
Backlight Lifespan	50000 hours
Touch Panel	Single touch analogue resistive
Type Of Cooling	Natural convection
Type Of Installation	Indoor installation
Cut-Out Dimensions	190 (+ 1/- 0) x 135 (+ 1/- 0) mm
Width	8.02 in (203.6 mm)
Height	5.85 in (148.6 mm)
Depth	1.42 in (36 mm)
Net Weight	2.65 lb(US) (1.2 kg)

## Environment

Ip Degree Of Protection	Front panel IP66 Front panel IP67
Nema Degree Of Protection	NEMA 4X front panel

Price is "List Price" and may be subject to a trade discount – check with your local distributor or retailer for actual price.

<b>Standards</b>	UL 508 ANSI/ISA 12-12-01 Class I division 2 CSA C22.2 No 213 CSA C22.2 No 142 IEC 61132-2
<b>Product Certifications</b>	CULus RCM CE KC UKCA UKEX
<b>Ambient Air Temperature For Operation</b>	32...140 °F (0...60 °C) IEC 61131-2
<b>Ambient Air Temperature For Storage</b>	-4...140 °F (-20...60 °C)
<b>Relative Humidity</b>	10...90 % non-condensing
<b>Operating Altitude</b>	6561.68 ft (2000 m)
<b>Vibration Resistance</b>	3.5 mm constant amplitude 5...9 Hz) IEC 61131-2 9.8 m/s² 9...150 Hz) IEC 61131-2
<b>Shock Resistance</b>	147 m/s² IEC 61131-2
<b>Electromagnetic Compatibility</b>	Electrostatic discharge immunity test level 3 conforming to IEC 61000-4-2

## Ordering and shipping details

<b>Category</b>	US10MC222567
<b>Discount Schedule</b>	0MC2
<b>Gtin</b>	3606480687280
<b>Returnability</b>	Yes
<b>Country Of Origin</b>	US

## Packing Units

<b>Unit Type Of Package 1</b>	PCE
<b>Number Of Units In Package 1</b>	1
<b>Package 1 Height</b>	5.31 in (13.5 cm)
<b>Package 1 Width</b>	8.27 in (21 cm)
<b>Package 1 Length</b>	10.43 in (26.5 cm)
<b>Package 1 Weight</b>	3.53 lb(US) (1.6 kg)
<b>Unit Type Of Package 2</b>	S03
<b>Number Of Units In Package 2</b>	2
<b>Package 2 Height</b>	11.81 in (30 cm)
<b>Package 2 Width</b>	11.81 in (30 cm)
<b>Package 2 Length</b>	15.75 in (40 cm)
<b>Package 2 Weight</b>	8.33 lb(US) (3.78 kg)
<b>Unit Type Of Package 3</b>	CAR
<b>Number Of Units In Package 3</b>	8
<b>Package 3 Height</b>	13.19 in (33.5 cm)
<b>Package 3 Width</b>	17.91 in (45.5 cm)
<b>Package 3 Length</b>	21.65 in (55 cm)
<b>Package 3 Weight</b>	28.69 lb(US) (13.012 kg)

# Contractual warranty

---

Warranty

18 months

## Sustainability

**Green Premium™ label** is Schneider Electric's commitment to delivering products with best-in-class environmental performance. Green Premium promises compliance with the latest regulations, transparency on environmental impacts, as well as circular and low-CO<sub>2</sub> products.

**Guide to assessing product sustainability** is a white paper that clarifies global eco-label standards and how to interpret environmental declarations.

[Learn more about Green Premium >](#)

[Guide to assess a product's sustainability >](#)



Transparency RoHS/REACH

## Well-being performance

Mercury Free

Rohs Exemption Information Yes

## Certifications & Standards

Reach Regulation

[REACH Declaration](#)

Eu Rohs Directive

Pro-active compliance (Product out of EU RoHS legal scope)

China Rohs Regulation

[China RoHS declaration](#)

Environmental Disclosure

[Product Environmental Profile](#)

Weee

The product must be disposed on European Union markets following specific waste collection and never end up in rubbish bins.

Circularity Profile

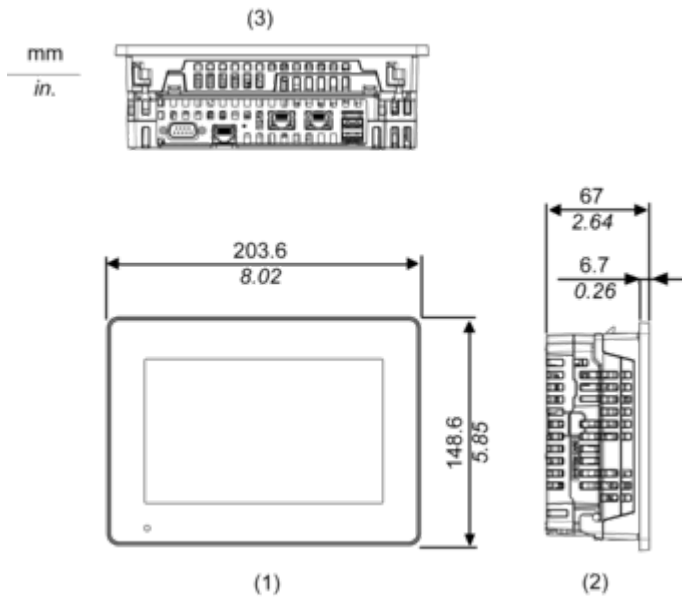
[End of Life Information](#)

California Proposition 65

WARNING: This product can expose you to chemicals including: Lead and lead compounds, which is known to the State of California to cause cancer and birth defects or other reproductive harm. For more information go to [www.P65Warnings.ca.gov](http://www.P65Warnings.ca.gov)

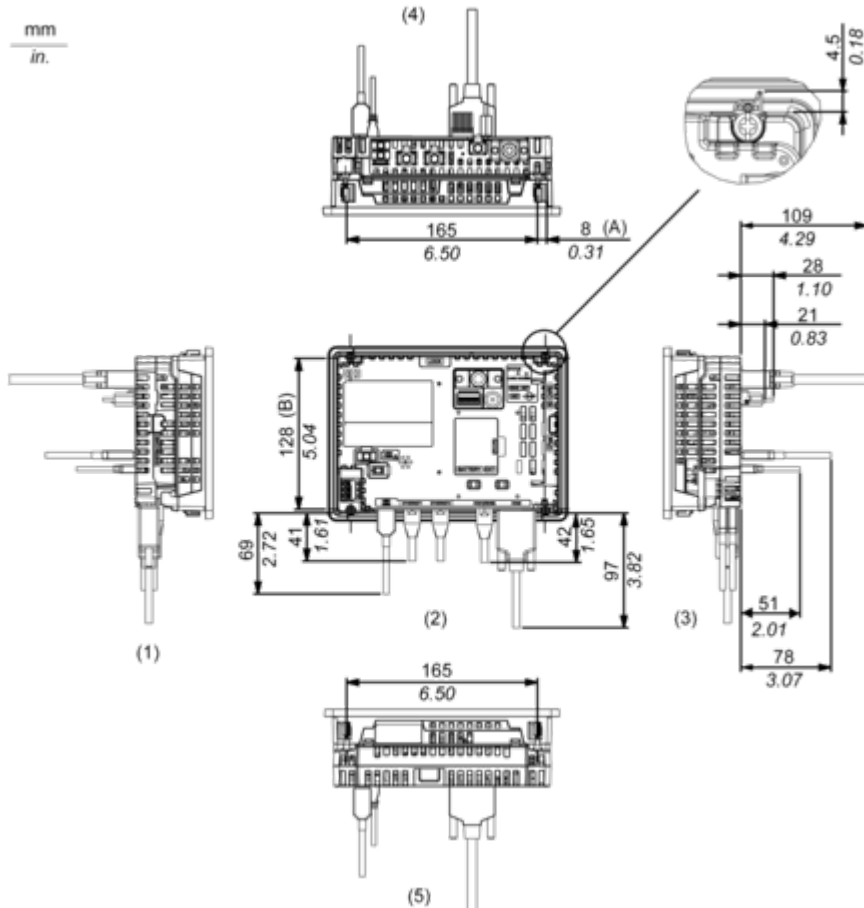
External Dimensions

Display Unit with Box Module



- 1 Front
- 2 Left
- 3 Bottom

Installation with Installation Fasteners and Dimensions with Cables



(A) Rotation area of the fastener

(B) Pitch of the center of installation fastner screws

1 Right

2 Front

3 Left

4 Bottom

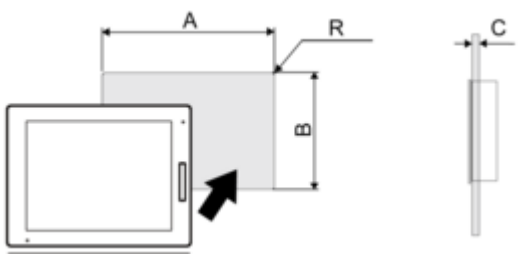
5 Top

## Mounting and Clearance

### Mounting

---

#### Panel Cut Dimensions



Dimensions in mm

A	B	C	R
190 (+1/-0)	135 (+1/-0)	1.6...5	3 max.

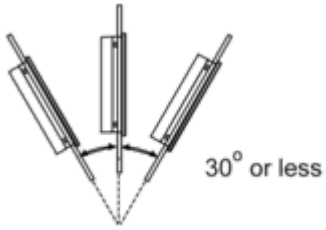
Dimensions in in.

A	B	C	R
7.48 (+0.04/-0)	5.31 (+0.04/-0)	0.06...0.2	0.12 max.

## Installation Requirements

---

### Mounting Angle



When installing this product in a slanted position with an incline more than 30°, the ambient temperature must not exceed 40 °C (104 °F). You may need to use forced air cooling (fan, A/C) to ensure the ambient operating temperature is 40 °C or less (104 °F or less).



Clearance

---

